



Series 8403

Pneumatically Operated Remote Control Valve for Freshwater and Seawater Service



8403-11

- Single Seat with Resilient Disc Insures Tight Seal
- Simply Designed with Few Working Parts
- Quick Response to Remote Control
- Fully Supported Frictionless Diaphragm
- Leak-proof Service Assured – No Packing Glands
- Single Tube Line Required for Control
- Opens Wide for Minimum Flow Resistance

The Cla-Val 8403 Series Remote Control Valve is used where “on-off” control is required. Pressure signals from a remote control “open or close” a small auxiliary valve installed on the main valve cover, which in turn opens or closes the main valve. Only the small amount of fluid in the auxiliary valve cover must pass through the remote control pilot in order to fully open or close the larger main valve.

Specifications

| | |
|--------------------------|--|
| Sizes | Globe: 1 1/2" - 8" flanged |
| End Details | 125 ANSI B16.1 |
| Pressure Ratings | 150 class - 250 psi Max. |
| Temperature Range | Water: to 180° F. Max. |
| Materials | Main valve body & cover: Ductile Iron option in Nickel Aluminium Bronze |

Pilot control system:
Cast bronze ASTM B61 with monel trim
Stainless Steel 316 Tubing & Fitting

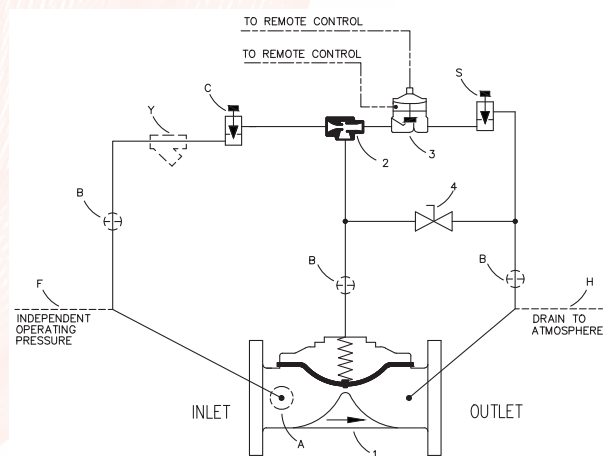
***Internally & Externally Epoxy Coated**

Schematic Diagram

| Item | Description |
|------|------------------|
| 1 | W Series |
| 2 | X47A Ejector |
| 3 | 100-02 Powertrol |
| 4 | CK2 Ball Valve |

Optional Features

| Item | Description |
|------|--------------------------------|
| A | X46A Flow Clean Strainer |
| F | Independent Operating Pressure |
| H | Drain to Atmosphere |



Cla-Val Pacific
45 Kennaway Road, Woolston, Christchurch
Tel: +64 (0)3 964 4860
Email: aspacsales@cla-val.com
www.cla-valpacific.com

